



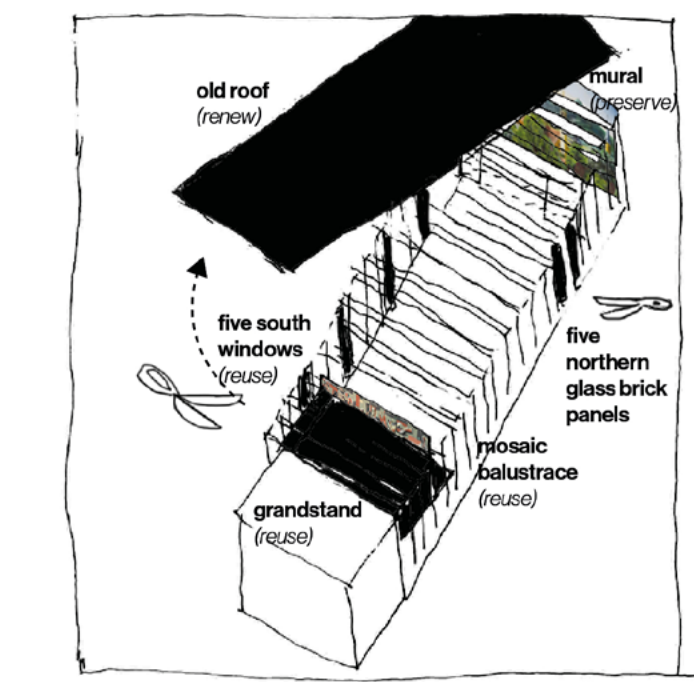
View of the south facade with village shop and snack garden
The building opens onto the forecourt with a new village shop. There is apple tart from the garden and fresh mint tea. In the snack garden, the gardening club grows zucchini and eggplants under the guidance of Mr. Meierding from the day care center. Mr. Meierding is a trained gardener



View from the orchard meadow onto the north facade and the new gate
Harvest time, hustle and bustle, fruit is transported via the new ramp and sorted in the hall. In the kitchen, jam is already being made in two large pots and fruit is being preserved. Tonight there will be an open-air cinema: the screen is about to be hung on the facade.



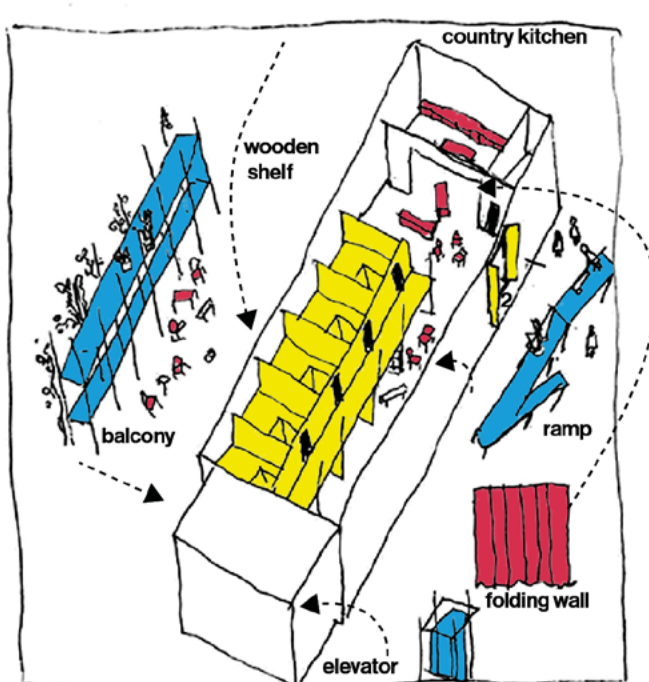
View of the hall with the new wooden rooms on the left and the kitchen in the background
Today there is to be a feast. Everything still looks like it is being busily prepared. The Fichtelgebirgsverein (Fichtel Mountains Association) is still in a meeting and the fruit crates have not yet been distributed. Fortunately, you can simply draw the curtain in front of the kitchen later—after preserving and making jam, no one has really cleaned up yet.



1 Precise incisions

With the aim of making the *smallest possible intervention*, the first step is to make targeted changes to the existing structure. The aging roof is removed. Five sections of glass blocks are dismantled on the north facade to make room for the future opening to the field. Five windows are removed from the south facade. Here, one will soon step onto the south balcony that has been built in front. The removed windows will find their place in the north facade in the future.

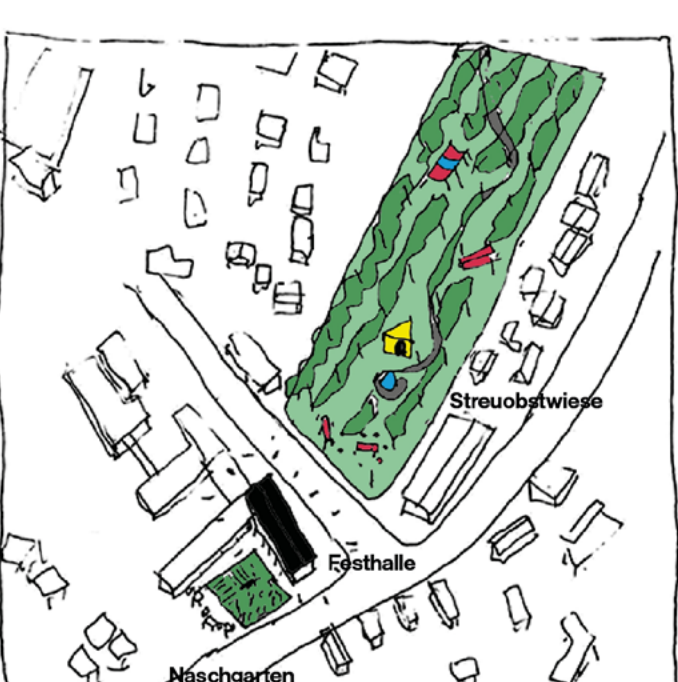
Inside the hall, the grandstand is being dismantled—the beautiful mosaic balustrade will be reused in the counter of the new village shop, and the doors to the equipment rooms will form the new entrance gate to the orchard. The stage platform will be removed so that in future the stage area can be accessed at ground level from the hall. The new country kitchen in the former stage area will thus be accessible without barriers.



2 Activating additions

Five interventions at selected locations will transform the hall into an inclusive space with a variety of possible uses. The activating additions follow the guiding principles of flexibility, accessibility, and dismantlability.

- Wooden shelf: A light, two-story wooden fixture in the hall is oriented directly toward the south facade. The fixture takes up approximately 2/3 of the hall's width and length. The shelf divides the hall both spatially and functionally, thus enabling several specific uses of the old festival hall.
- Country kitchen: A kitchen for processing the orchard fruit is installed in the former stage area.
- A steel balcony on the south side provides the necessary shade and offers a chance to enjoy the sun and views of the cottage garden.
- An external elevator next to the staircase provides barrier-free access to all floors.
- A ramp with a 5% incline on the north side is the central connection to the orchard. Walkers, wheelchairs, and wheelbarrows full of apples and pears find their way into the hall here.

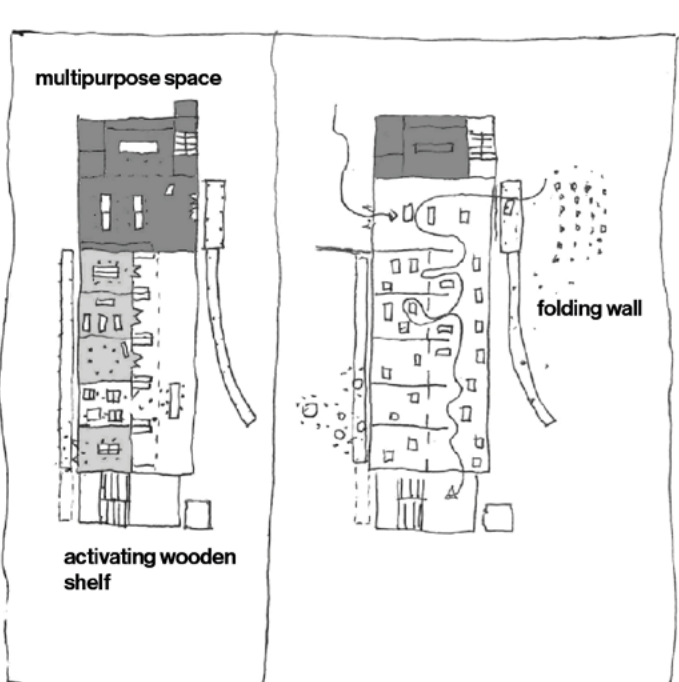


3 A new landscape: between cottage garden and orchards

The old festival hall forms a central hub in the redesign of the village center of Speichersdorf/Kirchenlaibach. We see the hall and its two outdoor spaces as a mediating spatial structure between the train station, school, and new center.

On the south side, the intimate cottage garden not only provides good climatic conditions for growing currants, espalier fruit, and vegetables, but also serves as a place of exchange for day guests from the senior care center and walk-in customers from the new village store. To the north, the extensive and biodiverse orchard meadow stretches all the way to the country road, with a variety of microhabitats that are open to wildlife, residents as well as schoolchildren, who can do their homework here in the afternoons, participate in the beekeeping club, or secretly meet their sweethearts behind the apple tree.

The open spaces complement the new village center in front of the multifunctional hall with a productive landscape. The integration of the landscape into the design brings centuries-old, and now often almost forgotten, cultural practices of landscape management back into the everyday life of the community.



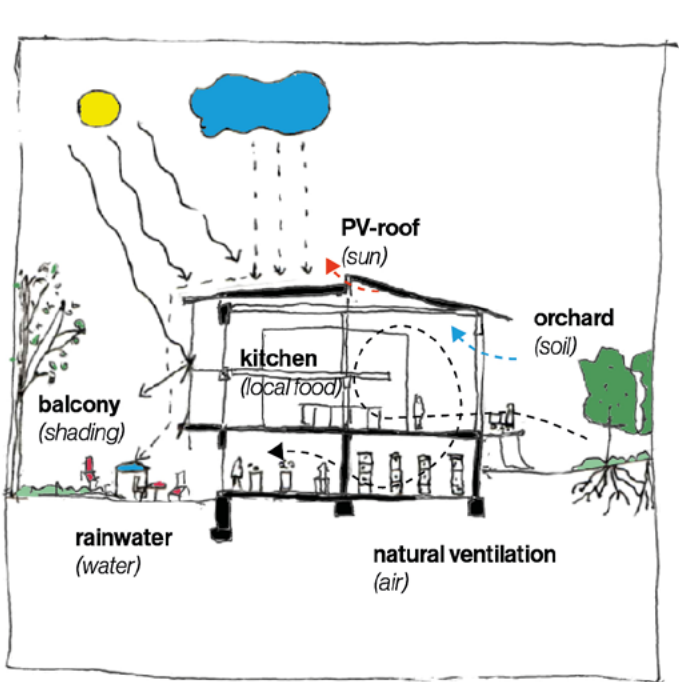
Festival hall and shelving = a toolbox of possibilities

The fixtures allow for flexible use of the hall in various configurations during the day and at night, during the week and on weekends. A folding wall and the doors in the wooden shelf can be used to create three specific zones that can be interconnected as needed:

- 1 Country kitchen + multipurpose room
- 2 Foyer
- 3 Multifunctional room capsules

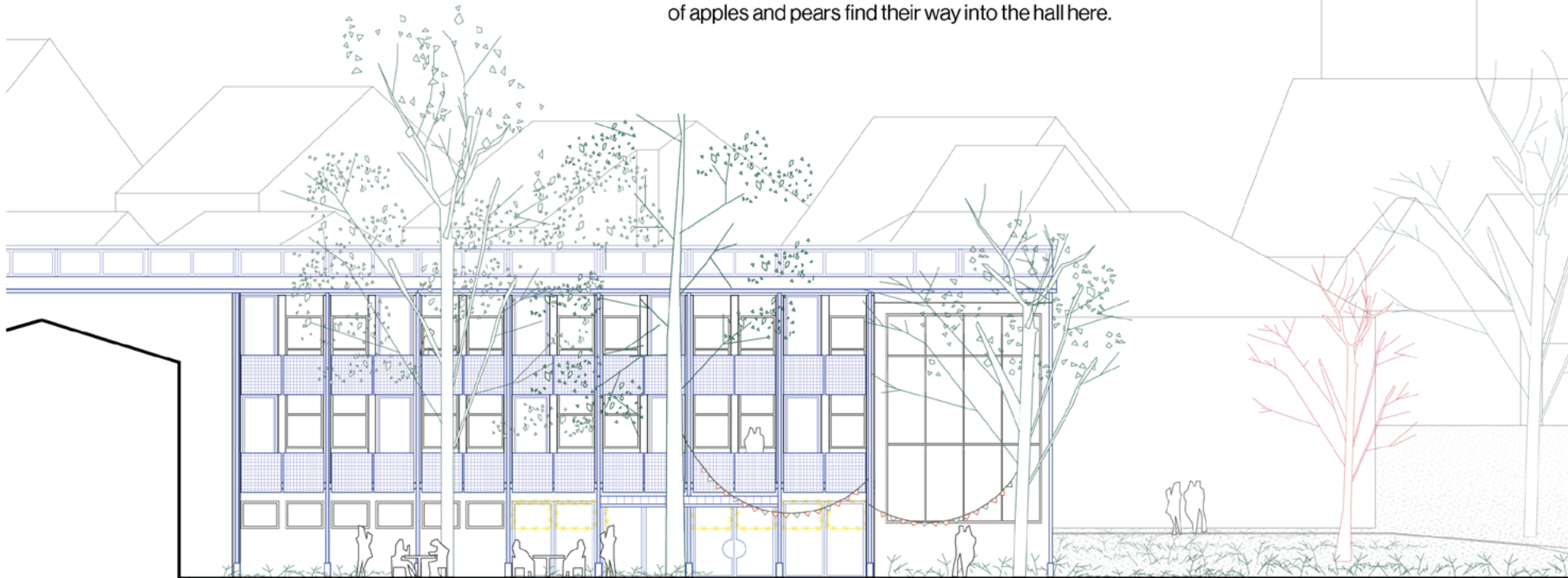
For example, on Tuesday afternoons, the gardening club can cook in the country kitchen, while the flyers for the church fair are being frantically sorted in the multifunctional rooms, and a local agricultural start-up from the University of Bayreuth is making a breakthrough in programming on the first floor of the wooden shelf.

On Sunday, the big Fichtelgebirge flea market takes place. All the rooms in the hall are connected to form one large space. People gather on the north facade in front of the new gate to listen to the Speichersdorfer Musikanten at the "Concert in the Orchard."

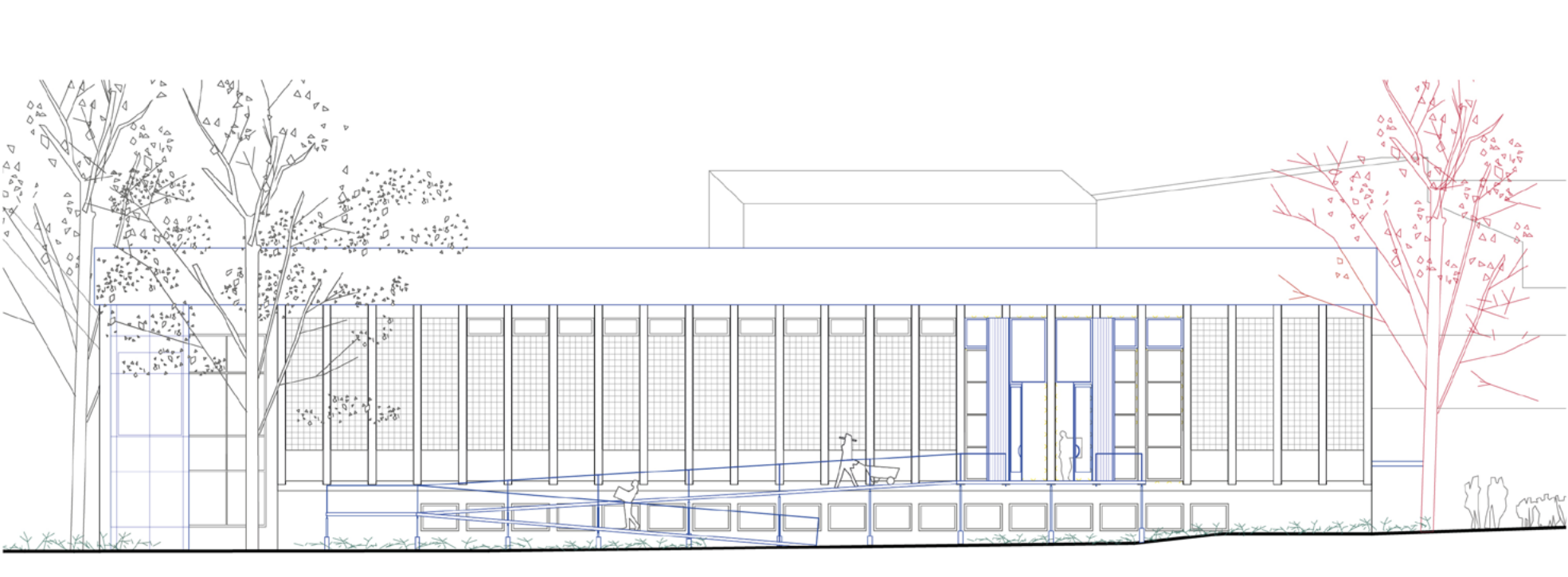


The festival hall as a production facility

The old festival hall becomes a place for gathering, producing, and eating together. Various types of fruit come from the orchard throughout the year, which are processed in the hall's kitchen. The cottage garden becomes a place of collaborative creation. Here, students and day guests from the senior care facility help each other. The hall's new roof produces a lot of electricity. So much that it can even partially supply the school. The PV modules on the balustrade of the south balcony also capture the energy of the low winter sun and at the same time cast a shadow on the glazed south facade, thus preventing the hall from overheating. The skylight in the hall allows natural ventilation of all rooms.



south elevation, M 1:200



north elevation, M 1:200